

EndoClear Mouse Recombinant alpha-Synuclein Protein

Revision Number: 2.0

Last updated: 18March2024

Catalog #	AS-56082
Size	100 µg, 500 µg, 1000 µg

Product Name: EndoClear Mouse Recombinant alpha-Synuclein Protein

Catalog Number: AS-56082

Lot Number: See label on the vial

Amount/size: 100 µg, 500 µg, 1000 µg

Source: The sequence (Accession # NP_001035916) corresponding to the full-length mouse a-synuclein protein plus an affinity tag was expressed in *E. coli*. The recombinant a-synuclein protein was purified from bacterial lysate using a proprietary method, including tag cleavage. The resulting protein contains an additional Gly at the N-term of the a-synuclein sequence. The calculated molecular mass of the recombinant a-synuclein protein is ~14.4 kDa.

Activity: α-synuclein was assayed for the fibrillation properties using Thioflavin T assay.

Applications: Fibrillation, oligomerization, cell toxicity studies.

Purity: Greater than 90% as determined by SDS-PAGE.

Endotoxin: Less than 0.1 EU per µg/protein as tested by LAL method.

Storage: The purified α-synuclein is supplied as lyophilized powder salt free. Store at 2-4 °C for immediate use within 1-2 weeks or at -80 °C for up to 12 months.

Instructions:

A-synuclein is a major component of Lewy bodies in the affected neurons in Parkinson's disease.¹⁻⁴ This protein consists of a conserved degenerative amino-terminal domain and an acidic carboxyl-terminal with higher sequence divergence.¹⁻⁴ A-synuclein is predominantly expressed in brain: specifically in cerebellum, thalamus, neocortex, hippocampus, and striatum regions.¹⁻² Other tissues express α-synuclein at very low levels.¹⁻⁴ The physiological role of α-synuclein is not yet well understood. However, the presence of imperfect KTKEGV lipid interacting repeats suggests that it may be involved in synaptic vesicle homeostasis.³

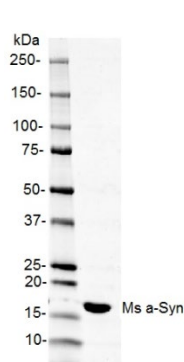


Figure 1.

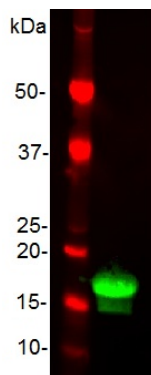


Figure 2.

Figure 1. Mouse α-synuclein on SDS-PAGE.

Purified protein was loaded onto 10-20% Tris-HCl gel at 3 µg/well.

Figure 2. Western Immunoblot of mouse α-synuclein.

Purified mouse α-synuclein protein was probed with anti-α-synuclein specific antibody.

Related Products

Product Name	Cat. #
Recombinant human α - synuclein, HiLyte Fluor™488 labeled	55457
Sensolyte® Anti-α-Synuclein (Human) ELISA Kit	55550-H
Sensolyte® Anti-α-Synuclein (Rat) ELISA Kit	55550-R
EndoClear™* Human Recombinant alpha - Synuclein	55555
EndoClear™Plus Recombinant Human alpha - Synuclein	56081
Recombinant human α - synuclein, biotin labeled	55581
EndoClear™* Rat Recombinant alpha - Synuclein	56083

References:

1. Rivers, R. et al. *Protein Science* **17**, 887-898 (2008).
2. Bruening, W. et al. *Cancer*. **88**, 9, 2154-2163 (2000).
3. George M. J. *Genome Biology* **3**, 1, 1-6 (2001).
4. Latawiec, D. et al. *PLoS ONE* **5**, 2, 1-8 (2010).

For Research Use Only!